

# SKULLS, TEETH AND DIET

European Wolf Skull

**THIS TEACHERS' SHEET** aims to let you know what is involved in your chosen activity so that you can prepare your class for the day and help them to get as much out of their visit as possible. Trips and visits away from school are expensive, but if planned carefully, a visit to The Park can provide a basis for a wide range of activities across all aspects of learning. Linking your visit to activities at school, before and afterwards, will really strengthen the learning experience for your class and will make the most of the time and money spent during your visit to Highland Wildlife Park.

## PRIOR TO YOUR VISIT

Teachers can visit the Park free of charge to help with lesson planning and to make sure you know the layout and facilities available at the Park. Please contact the education officer on [01540 651981](tel:01540651981) to arrange your free visit.

If you require any help or more information prior to your visit also contact the Education Officer on [hwpeducation@rzss.org.uk](mailto:hwpeducation@rzss.org.uk).

Remember that a visit to the Highland Wildlife Park can offer a great learning platform for many different subjects and topics such as English, Art and Current affairs—be flexible and imaginative in your approach to your visit and how you use your visit to develop the key capabilities in your class.

**DURING YOUR VISIT** to the Park your class will have the chance to handle and look at many different animal skulls and feeding signs in the Dulverton Room, as well as seeing the animals around the Park. We will investigate how each different species' dentition is suited to their diet. There will be the chance to ask questions as well as lots of interesting facts, stories and explanations from our Education Officers.

Things to encourage your class to think about to **HELP YOU GET THE MOST FROM YOUR VISIT**

- What are our teeth used for?— front teeth for biting and back teeth for chewing.
- Why do we have to chew our food?
- Do animals and humans use teeth for anything other than eating? Tools, weapons, defence.
- What are teeth made up off?
- How many different types of teeth are there?

European  
Wolf



**VOCABULARY** - encourage pupils to investigate what these words mean. They will then be able to understand and take in more on the day of their visit.

- Carnivore
- Herbivore
- Omnivore
- Dentition
- Carnassials teeth
- Canine
- Molar

### OTHER TOPICS WHICH MAY BE OF INTEREST

- What are peoples perceptions of predators?
- What is the point of zoos?
- Zoos and conservation
- Animals at risk
- Evolution
- Animal observation and enrichment
- Polar bear evolution and adaption
- Re-introduction
- Wildlife crime
- Enclosure design



Japanese Macaque

### ACTIVITIES FOR THE CLASSROOM - BEFORE OR AFTER YOUR VISIT

#### Social education/ Drama/ Art

Expressions and body language— get children to draw, sculpt or act out a short scene with different facial expressions e.g. smile, grimace, extreme anger. Which expressions can you see teeth in? Think about situations when animals (e.g. dogs or monkeys) show their teeth. Do you think there are any similarities with human emotions?

#### Links

<http://www.bbc.co.uk/schools/gcsebitesize/drama/galleries/expressionrev1.shtml>

### HEALTH EDUCATION

Links to healthy human teeth and dental care/ hygiene

What can cause damage to teeth?

Has anyone in the class lost a tooth recently? Put a tooth in a glass of coke and see how long it takes to dissolve.

Would we be able to survive with no teeth? Would animals be able to survive with no teeth.

#### Links

<http://www.dentalhealth.org.uk/faqs/browseleaflets.php>

<http://www.healthyteeth.org/>



Musk Deer Skull



Eurasian Lynx Skull

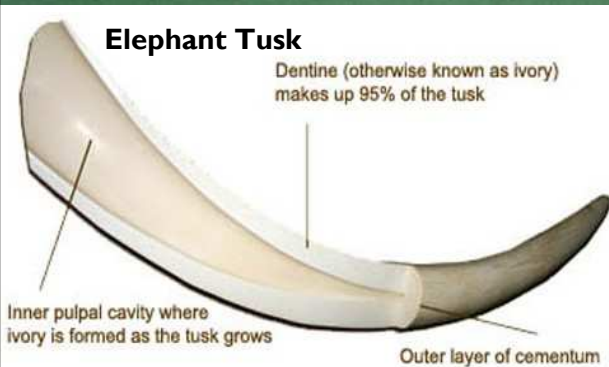
### ENGLISH/ MEDIA STUDIES

Investigate stories/ creative writing with a tooth / teeth / skulls theme. Where did myths and stories of vampires come from? How has it influenced our popular culture today? Why are creatures with large canines sometimes associated with evil? Is this fair? Encourage children to discuss and investigate facts before forming opinions.

### RESOURCES

#### Links

<http://www.skullsite.co.uk/lists.htm> - a website with clear pictures of the skulls of different animals



European Red Deer

